

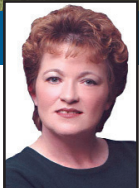
# Weekend **SHOWCASE**



**\$225,000**

**LAKE ERIE**

Hillside building lot with incredible unobstructed lake view! 71 ft beach frontage (over 800 sq metres in total) in quaint Port Burwell located between Port Stanley & Long Point, less than 2 hrs from T.O. Municipal water & sewer connects. Village amenities, Prov Park, beautiful beaches. Call for complete details.



**DEBBIE PALMER**  
Sales Representative

**ROYAL LEPAGE LANDCO REALTY BROKERAGE 519-631-8000**



**\$549,000**

**BEST VALUE IN RIVER OAKS!**

Stunning 5 bedroom, 4 bath, Georgian centre hall, boasting approx 3200 sq.ft. of executive living, including an incredible 3rd floor loft suite. Upgrades include hardwood & ceramic floors, coffered ceilings, 2 sided gas fireplace, Kohler fixtures, top line appliances, all new hardware & light fixtures plus much more, all in pristine condition. Call now to view this Georgian Gem.



**BRENDA DINELE**  
Sales Representative

**ROYAL LEPAGE RE SERVICES INC BROKERAGE 905-338-3737**



**NEW LISTING**

**\$749,900**

**LUXURY CONDOMINIUM @ THE PALACE 1900 THE COLLEGEWAY, MISSISSAUGA**

Corner suite with South-East panoramic view of Mississauga/Toronto & the Lake. Approx. 2,110 sq. ft. with 2 bdms + den. Sub-Zero fridge. Dacor gas stove. Miele dishwasher. Beautiful hardwood flooring. Added breakfast counter. Extra built-in cabinets. Spacious balcony + BBQ outlet. Quality finishing throughout. Resort-style amenities & guest suites. Call Gerry direct @ 905-302-2403 for details &/or viewing. "THE PALACE RESIDENT SPECIALIST"



**GERRY BROWN**  
Broker

**ROYAL LEPAGE RE SERVICES LTD. BROKERAGE 905-828-1122**



**OPEN HOUSE SUN. 2-4 143 TRILLER PLACE**

**\$525,000**

**LOCATION! LOCATION!**

Lovely 4 bdrm. detached 2 storey, very private backyard with inground pool. Designer colours throughout. Walk to lake and Bronte Village (future home of Butterfly Park). E/I kitchen, ensuite bathroom. Car buff's dream garage. Safe cul-de-sac for kids. Don't miss this wonderful opportunity. Cell 905-467-8786



**LAURINDA DORN**  
Sales Representative

**ROYAL LEPAGE RE SERVICES LTD BROKERAGE 905-338-3737**



**NEW PRICE**

**\$499,000**

**GREAT MORRISON AREA**

Very private rear yard with no houses behind. Finished on all levels. Three spacious bedrooms, open concept main floor with an updated kitchen and a recreation room in the basement. Call Anne Ribau for further details 905-338-3737.



**ANNE RIBAU**  
Sales Representative

**ROYAL LEPAGE RE SERVICES INC BROKERAGE 905-338-3737**



**OPEN HOUSE SUN 2-4 1065 BRIDGE ROAD**

**\$399,000**

**1+1 FAMILY HOME!**

RV sized garage, large private lot, solid, quality custom built home with main floor family room. Studio or 1 bedroom apartment has separate entrance. Amazing value at \$399,000



**HELEN MARA**  
Sales Representative

**ROYAL LEPAGE RE SERVICES INC BROKERAGE 905-845-4267**



**GARY LEISKAU**  
Sales Representative  
**ROYAL LEPAGE REAL ESTATE SERVICES INC BROKERAGE**  
905-338-3737 DIRECT  
416-562-0357



**\$305,427**

**PARK SETTING ON QUIET STREET**

Spacious semi on large pie shaped lot backing onto green space. 3 bdrm with mast. ensuite and finished basement with office. Generous eat-in kitchen with massive 2 tier deck ideal for entertaining. Close to schools & shopping.



**OPEN HOUSE SUNDAY 2-4 403 CREEKPATH**

**\$515,000**

**GREAT VALUE IN LAKESHORE WOODS**

Beautiful 4 bdrm with 2 ensuites-stone and brick exterior - strip hardwood-huge eat-in kitch with extended cabinets-sep living room-large din & fam rooms-coff ceiling & pillars-spacious 2 car garage with bsmt entrance. This is a must see!



**OPEN HOUSE SAT/ MON 2-4 2125 JARDINE CRES. BURLINGTON**

**\$549,900**

**EXECUTIVE HOME ON RAVINE**

Executive 4 bdrm with main floor den - strip hdwd on main floor- 3 car garage - vaulted ceiling/2 story foyer-massive Canac kitchen with extended cab., lg bkfst area, calif shutters, stainless appl's - generous master with huge ens. and upper deck retreat. Don't miss this one!

**OPEN HOUSES SUNDAY 2 - 4 PM**

**East Oakville \$724,900**

Renovate or Build  
**2130 BLYTH CRESCENT**



**DOROTHY THOMSON**  
Broker  
905-339-7819

**West Oak Trails \$339,900**

Super Sharp Semi  
**1503 PINECLIFF ROAD**  
www.TheThomsonAdvantage.ca



**KEVIN THOMSON**  
Sales Representative  
905-330-9019

**ROYAL LEPAGE RE SERVICES LTD. BROKERAGE 905-845-4267**



**CHRISTOPHER INVIDIATA**  
Sales Representative  
**RE/MAX ABOUTOWNE REALTY CORP. BROKERAGE**  
905-338-9000  
www.invidiata.com



**OPEN HOUSE SUNDAY 2-4**

**\$409,900**

**1493 DERBY COUNTY CRES**

Absolutely gorgeous 3 bedroom 2-storey brick home in West Oak Trails. Stunning landscaping with large deck and fenced yard. Loads of upgrades with over \$70,000 in improvements, 2 baths, 1 fireplace, hardwood floors, central vac, etc. Finished lower level. Immaculate inside and out!



**OPEN HOUSE SUNDAY 2-4**

**\$1,350,000**

**172 BOXLEY RD, BURLINGTON**

Custom designed and custom built home on very large lot in mature and established area. Approx. 3,300 SF with 4 bedrooms, 6 baths, 3 fireplaces. Offering hardwood floors throughout, custom cabinets, granite counters & floors - still opportunity to select finishes. Occupancy within 60-90 days.



**OPEN HOUSE SAT 9:30AM-12**

**\$1,495,000**

**PORT CREDIT-LAKE VIEWS**

One of a kind 3841 SF Open Concept Executive Townhome in Mississauga with spectacular lake views. This 3 BR, 2.5 bath professionally decorated home backs onto a private woodlot with lg deck. Includes hardwood, high ceilings and gorgeous built-ins. Open kitchen w/ breakfast area, sitting room and cappuccino bar. A must see!



**OPEN HOUSE SAT 9:30AM-12**

**\$1,998,000**

**5647 NO. 14 SIDEROAD, MILTON**

Unique opportunity offering 23 acres backing onto the Escarpment with unbelievable views. Perfect location for equestrian/riding center close to all amenities. Property offers a 24-stable horse barn with full living quarters and indoor riding ring. Separate house, approx. 3,000 sq. ft. with top of the line finishes.